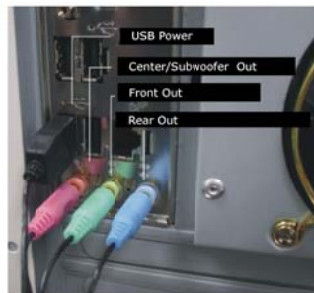


Quick Install

3 stereo plug connector for 5 channel audio port and USB connector for Power.(Picture of AC97 3 stereo plug & USB connector).



A. The Picture of the AC97 plug inserted into 6-channel surround sound card built on the motherboard.



B. Picture of AC97 plug inserted into the 6-channel surround sound card.



AC97 5.1 Channel Surround Sound Headphone for PC Menu

1. Mentor AC97 Tri-color stereo plugs:
 Light green: Front Speaker Out
 Light blue: Rear Speaker Out
 Light pink: Center/Subwoofer Speaker Out

2. PC requires 5.1 Channel Sound card or motherboard with on board 5.1 channel sound, which supports Ac3 or AC97 CODEC. Such as Creative or Realtek Products.

3. The color of the appropriate speaker jacks for a 6-channel sound card on the motherboard (for example: ASUS Motherboard):
 Light green: Front Speaker Out
 Light blue: Rear Speaker Out
 Light pink: Center/Subwoofer Speaker Out

4. Color of speaker jack for 6 channel sound card:
 (For Creative Sound Card):
 Light orange: Front Speaker Out
 Light green: Rear Speaker Out
 Black: Center/Subwoofer Speaker Out

5. For Realtek Sound Card:
 Light green: Front Speaker Out
 Light blue: Rear Speaker Out
 Light pink: Center/Subwoofer Speaker Out

6. Check 3 stereo plugs (Front Speaker Out, Rear Speaker Out and Center/Subwoofer Speaker Out), if there is a speaker test error.

7. For sound build on the motherboard, make sure to [Enable] AC3 or AC97 on your motherboard BIOS.

8. Install the entire sound driver.

9. Adjust your Audio configuration by sound card manufacturer.

Audio Configuration :



<< Click the Sound Effect Icon >>



Select the "Speaker Test" from Audio Configuration dialog box. Click on the speaker to test that the speakers function properly.



Select the "6-channel mode for 5.1 speaker output", Synchronize the phonejack switch with the speaker setting.

System Settings:

For Windows 98SE

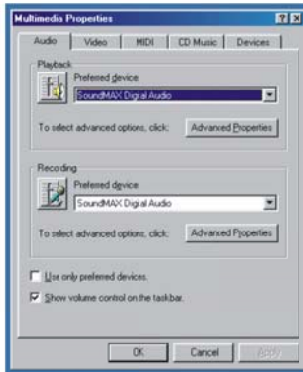
1. Select "Start" and Click the "Settings", then click the "Control Panel" appears to the right of "Settings".



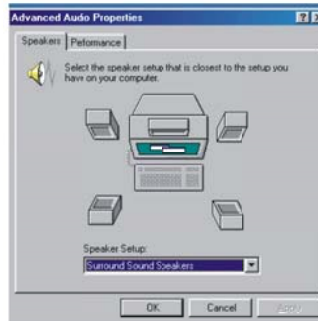
2. Click the "Multimedia" Icon that appears in the "Control Panel" dialog box.



3. Select "Audio" from Multimedia Properties box, Click "Advanced Properties".

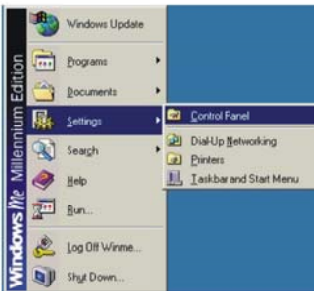


4. Select the "Surround Sound Speakers" from Speaker Setup, then Click "OK".



For Windows ME

1. Select "Start" and Click the "Settings", then Click the "Control Panel" appears to the right of "Settings".



2. Click the "Sound & Multimedia" Icon that appears in the "Control Panel" dialog box.

